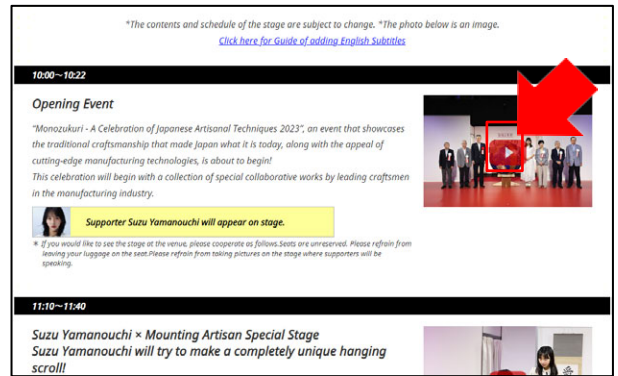


How to add English Subtitles

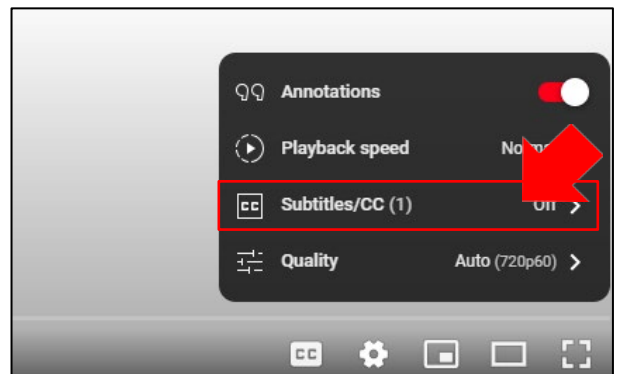
- ① Click the play button for the video you want to watch.



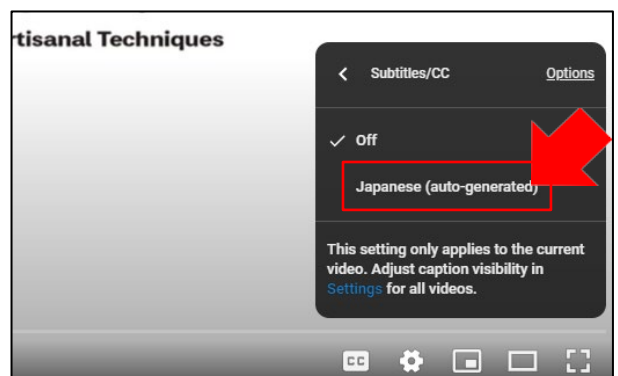
- ② Click  on the bottom right of the screen.



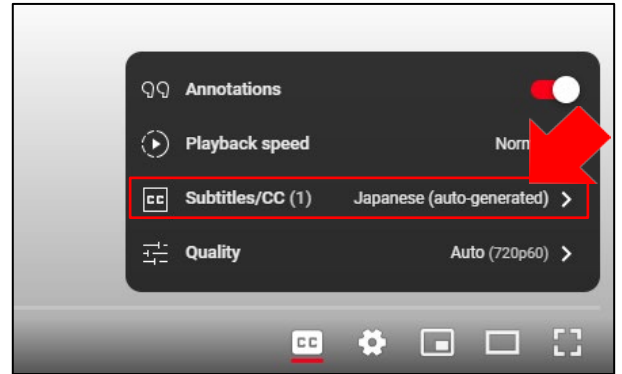
- ③ Click 「Subtitles」 .



- ④ Click 「Japanese (auto-generated)」 .



⑤ Click 「Subtitles」 .



⑥ Click 「Auto-translate」 .



⑦ Select a language.



⑧ Setting completed !

